

REHAB

Sheet music for Sousaphone, titled "REHAB". The music is written in treble clef, key of D major (two sharps), and 4/4 time. The score is divided into sections A, B, C, and D, with measures numbered 1 through 65.

Section A: Measures 1-5. Starts with a whole rest in measure 1, followed by eighth-note patterns in measures 2-5.

Section B: Measures 6-11. Continues the eighth-note patterns. Dynamics include *ff* (fortissimo) at measure 7.

Section C: Measures 12-16. Continues the eighth-note patterns. Dynamics include *ff* (fortissimo) at measure 15.

Section D: Measures 17-23. Features a change in rhythm to eighth notes with beams. Dynamics include *ff* (fortissimo) at measure 19.

Section E: Measures 24-30. Continues the eighth-note patterns. Dynamics include *f* (forte) at measure 24.

Section F: Measures 31-40. Features a change in rhythm to eighth notes with beams. Dynamics include *ff* (fortissimo) at measure 31.

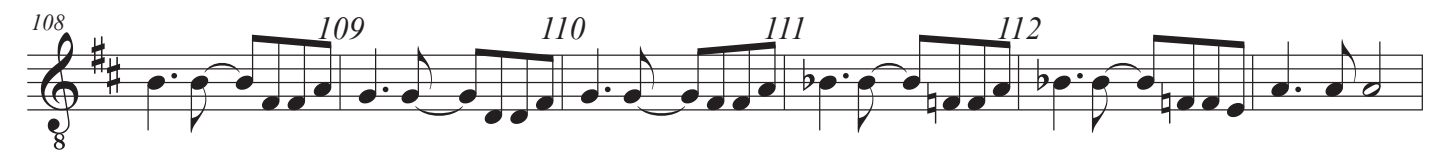
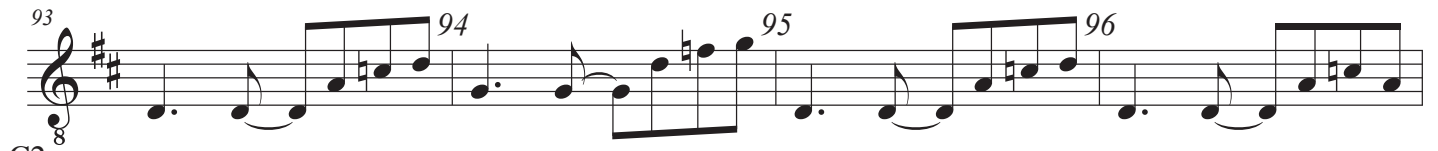
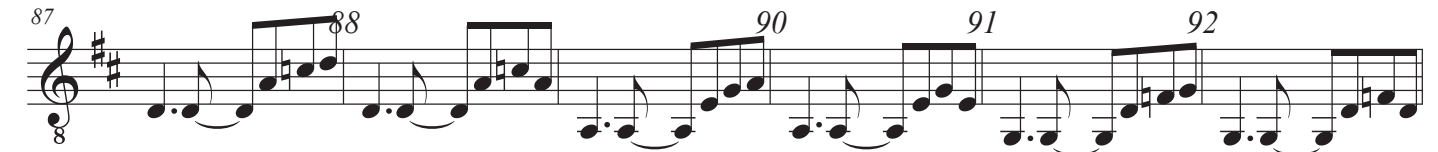
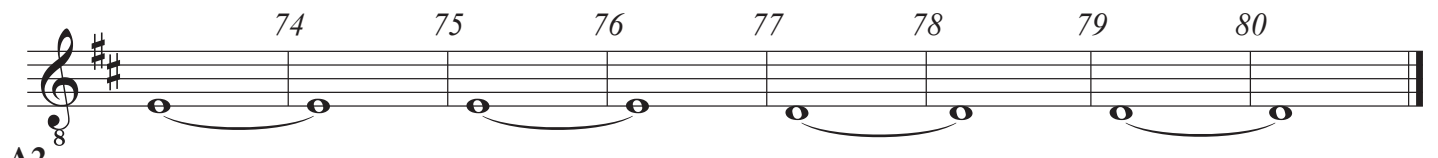
Section G: Measures 41-48. Continues the eighth-note patterns. Dynamics include *f* (forte) at measure 41.

Section H: Measures 49-56. Continues the eighth-note patterns. Dynamics include *f* (forte) at measure 49.

Section I: Measures 57-59. Continues the eighth-note patterns. Dynamics include *f* (forte) at measure 57.

Section J: Measures 60-65. Continues the eighth-note patterns. Dynamics include *f* (forte) at measure 60.

REHAB



FIN

